

# S - TYPE CONNECTORS



## GENERAL INFORMATION

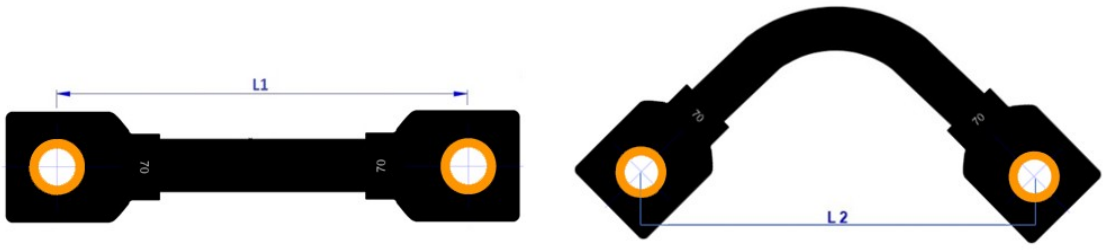
S type battery connectors are flexible products that allow the traction battery cells to be connected to each other. S type battery connectors are assembled to the battery cells with a specially insulated bolt that does not require a cover. S-type connectors are specially designed for use also in challenging environments

## FEATURES

- ❖ High current carrying capacity
- ❖ High flexibility
- ❖ High impermeability (Thanks to special cable insulation and injection materials)
- ❖ Standard products comply with GWT 650(IEC 60695-2-11).
- ❖ There is also VO UL94 / GWT 750 version in order to use in the environments where heat resistance is expected to be high (Mining etc.)
- ❖ Usage in challenging environments
- ❖ Terminal pull-out force complies with MIL-T 7928
- ❖ 100% resistance control and marking
- ❖ Insulation resistance > 1000 M $\Omega$  (Under 500 VDC)
- ❖ Protection rating is IP55 (IEC 60529-1)
- ❖ %99.9 Copper terminals

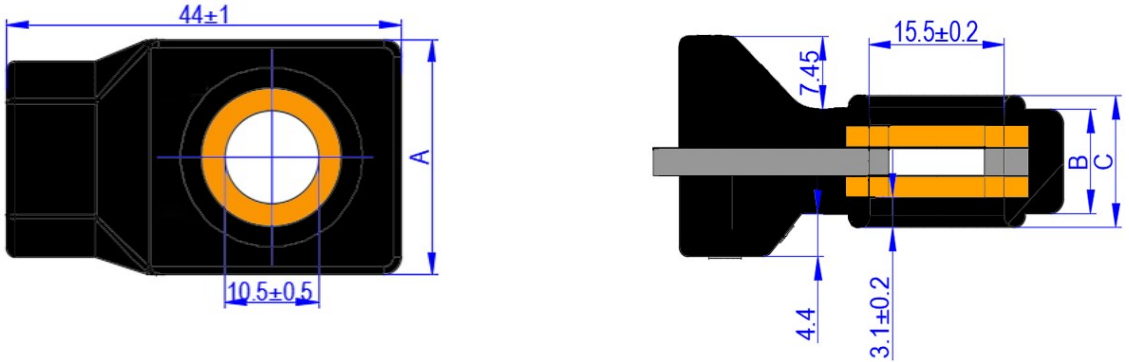
# S - TYPE CONNECTORS

## FLEXIBILITY TABLE



Minimum flexibility length(L2) table according to the connector length(L1)							
Connector Type:	Cable Section:	L2					
		L1: 85mm	L1: 95mm	L1: 110mm	L1: 130mm	L1: 150mm	L1: >150mm
S Type (Ferrule)	25mm <sup>2</sup>	45 mm	30 mm	30 mm	30 mm	30 mm	30 mm
	35mm <sup>2</sup>	45 mm	30 mm	30 mm	30 mm	30 mm	30 mm
	50mm <sup>2</sup>	50 mm	40 mm	30 mm	30 mm	30 mm	30 mm
	70mm <sup>2</sup>	-	-	40 mm	35 mm	35 mm	35 mm
	95mm <sup>2</sup>	-	-	55 mm	45 mm	45 mm	45 mm

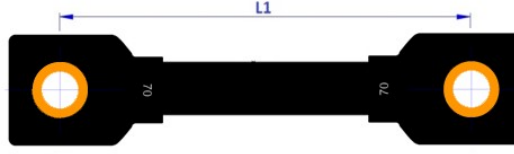
## DIMENSIONS (mm)



CABLE SECTION	A	B	C
25mm <sup>2</sup>	24.4±0.5	7.5±0.2	10.4±0.2
35mm <sup>2</sup>	26.5±0.5	8±0.2	10.8±0.2
50mm <sup>2</sup>	29.7±0.5	8.8±0.2	11.6±0.2
70mm <sup>2</sup>	31.1±0.5	9.8±0.2	12.6±0.2
95mm <sup>2</sup>	34.5±0.5	10.8±0.2	13.5±0.2

# S - TYPE CONNECTORS

## Product List



<u>Product code</u>	<u>Cable Section</u>	<u>L1(mm)</u>
---------------------	----------------------	---------------

MEKN76000016	25mm <sup>2</sup>	75
MEKN76000017	25mm <sup>2</sup>	95

<u>Product code</u>	<u>Cable Section</u>	<u>L1(mm)</u>
---------------------	----------------------	---------------

MEKN76000018	35mm <sup>2</sup>	85
MEKN76000000	35mm <sup>2</sup>	95
MEKN76000001	35mm <sup>2</sup>	110
MEKN76000015	35mm <sup>2</sup>	130
MEKN76000014	35mm <sup>2</sup>	150

<u>Product code</u>	<u>Cable Section</u>	<u>L1(mm)</u>
---------------------	----------------------	---------------

MEKN76000002	50mm <sup>2</sup>	95
MEKN76000003	50mm <sup>2</sup>	110
MEKN76000012	50mm <sup>2</sup>	130
MEKN76000013	50mm <sup>2</sup>	150

<u>Product code</u>	<u>Cable Section</u>	<u>L1(mm)</u>
---------------------	----------------------	---------------

MEKN76000004	70mm <sup>2</sup>	95
MEKN76000005	70mm <sup>2</sup>	110
MEKN76000020	70mm <sup>2</sup>	130

<u>Product code</u>	<u>Cable Section</u>	<u>L1(mm)</u>
---------------------	----------------------	---------------

MEKN76000011	95mm <sup>2</sup>	95
MEKN76000006	95mm <sup>2</sup>	110
MEKN76000008	95mm <sup>2</sup>	130
MEKN76000007	95mm <sup>2</sup>	750

\* Please contact us for different length and cable section requests.